



The Royal Alfred Seafarers' Society

Annual Report 2013



Caring for seafarers



PATRON:
H.R.H. The Princess Royal



FRONT COVER PICTURE:

The WAVERLEY, the last steam paddle ship in operation.
Like the Royal Alfred - traditional, long-lasting British seafaring quality...

The Royal Alfred Seafarers' Society

Annual Report 2013



Head Office, Weston Acres,
Woodmansterne Lane,
Banstead, Surrey SM7 3HB

T 01737 353763

F 01737 362678

E enquiries@royalalfred.org.uk

W www.royalalfredseafarers.com



Royal Alfred Seafarers



@RASeafarers



royalalfredseafarers



Registered as a Charity No. 209776

The maritime images on the front cover and pages 7, 8, 15, 38, 40, 42, 46 and 47 are courtesy of Gary Davies,
Maritime Photographic. www.maritimephotographic.co.uk



Welcome to the 148th Annual Report and Financial Statements of the Royal Alfred Seafarers' Society for the year ended 31st December 2013.

This is my fifth year as Chairman and I wonder where these years have gone. Time flies!

I am pleased to report that the Society continues to successfully meet its charitable objects 'providing care for former seafarers and their dependants in need', in all respects, in an environment where success in caring for elderly people is challenging and under intense scrutiny. You will find in the following pages clear evidence that we are achieving, and in many aspects exceeding, the standards and goals we must meet.

Our Patron, H.R.H. The Princess Royal, opened the new annexe bearing her name, in July 2011, and since that time we have exceeded our plan and timescale to fill these extra rooms, returning to maximum occupancy and financial targets much earlier than anticipated. Our new senior management structure and improved business planning have, I believe, greatly assisted in this success.

The new contracts, commencing early in the year, for external services (HR, IT, HSE, payroll etc) are now in place and working well, thanks to the diligence of our Chief Executive in arranging them.

In 2013 we sought to achieve a 'steady state' period following several years of improvements in governance, facilities, staffing and training, all aimed at providing the best possible care for those we serve, as we realised it was time to let everything settle down. It was pleasing to see this actually happen, although the reports from the Chief Executive and Home Manager that follow, bear witness to the fact that it is never quiet at Royal Alfred!

The Annual General Meeting in 2013 took place on the 30th May at Trinity House in the presence of our Patron. The meeting was very well attended and our guest speaker, Commodore Barry Bryant C.V.O. R.N., the Director General of Seafarers UK, gave an excellent overview of the maritime charity sector and the challenges we face. Royal Alfred continues to rely heavily on the grant giving maritime charities whose generosity, through their own hard work in fundraising and fund management, is reported in the accounts section and to whom we are extremely grateful.

At the end of the AGM it was with mixed emotions that I was able to ask Her Royal Highness to present farewell gifts to Captains Tony Braithwaite and Mike Marchant on their retirement as Trustees of the Society – having served for 37 and 23 years respectively! Theirs has been a fantastic contribution, giving so generously of their time and experience. We thank them most sincerely and will miss them both. As Tony Braithwaite's 37 years is surely a record, we are very pleased that he has been elected a Vice President of the Society.

Our new Trustee, Philip Wake, who joined us in 2012, has been very active and a great help and in 2013 we were pleased to welcome Jerry Wedge to the Society as a Trustee with considerable experience and skill in financial matters. Jerry is Director of Finance at Trinity House Lighthouse Service and knows how to deal with mariners over money matters! He is a very welcome addition to the Board of Management.



The Financial Accounts contained within this report show that our investment portfolio and income therefrom is steadily improving under the watchful eye of our Finance and Investment committees. We continue to hope that interest on our investments and growth will improve to allow us to do more for those in need. Keeping our costs and fees as low as possible for tenants and residents whilst keeping our standards of accommodation and care at the highest level is truly a remarkable balancing act and I thank all our Trustees, Head Office, Senior Management and all staff for their dedication and hard work that is so necessary to achieve this.

"I thank all our Trustees, Head Office, Senior Management and all staff for their dedication and hard work."

Our wonderful volunteers are the focus elsewhere in this Report (see pages 19 to 21) but I must add my special thanks and those of the Trustees to you who give your time and skills so generously to those we serve. You make a tremendous difference. Thank you.

A final thank you to Reverend Mick Hough, our Honorary Chaplain for many years, who has moved to a new parish, and a warm welcome to Reverend Art Barron who has succeeded him.

I hope you find this report interesting and informative. Please do let us know if you have any questions; we will be pleased to answer them. Thank you for your continued support. It is greatly appreciated.

**Captain Duncan Glass O.B.E., M.N.M.
Chairman**



It is always an interesting exercise to look back over a whole year's activity and encapsulate it in a few paragraphs of writing – and a real test to reflect it accurately.

I was once told that there are very few quiet days in the Royal Alfred, and always something major to get one's teeth into; in that regard 2013 was no disappointment. Although after the annexe, ground floor refurbishment and dementia care unit projects of 2012, I suppose the main theme was 'back to business as usual' – but with a few significant challenges overlaid!

Having set our course to put in place a number of contracts to outsource many components of our operational and business activity, filling the vacuum left by Methodist Homes for the Aged (MHA) in 2012, I am pleased to report that all went surprisingly smoothly. In particular, our accountancy services are now provided by Jacob, Cavenagh and Skeet and once established, for good measure, we asked our auditors to run their

rule over the new systems and controls – which proved that all is well. The audited accounts for the year are within this Annual Report as usual and show continued, solid progress towards our goal in 2014 of breaking even, despite a drop in income in the first few months due to an unexpectedly high turnover of residents and unusually low occupancy. Having consulted widely, this was a phenomenon not confined to us last year and was widespread across the nation's care homes. With the absolutely crucial clinical standards and governance being assisted, monitored, assessed and reported monthly upon by our excellent retained consultants Rob and Angie Fawcett, the Home Management, myself and the Board are able to take comfort from many positive comments as well as helpful support in taking the delivery of care to an even higher standard. With that very much in mind, the bold and visionary decision of moving to electronic care planning has already proved advantageous and we seem to be leading the way here as we have in others.

During the year, in partnership with our marketing agents at Acceleris, we further developed the website as a key tool in informing people of our existence and activities, and increasingly a means of reaching potential seafaring residents who may need our care or help. There were also other PR and advertising initiatives and one in particular gave much pleasure in running; that in support of Seafarers Awareness Week, the brainchild of Seafarers UK. We were pleased to welcome the local mayor and primary school children, the former cutting the excellent cake and the latter singing sea shanties for us! A further special cake was cut to mark and celebrate Anne Kasey's 30 years of service with the Society; from staff nurse to

current Home Manager over all that time of dedicated care for former seafarers is a truly magnificent record. When combined with the previous year's record of 50 years set by my Executive Assistant, Mrs Margaret Brazier M.N.M., and several others similarly coming along the 'pipeline', it speaks volumes for the Society's care of both staff and residents alike, and the recognised worth of its mission. Before leaving this particular section, it would be remiss not to mention, albeit briefly, the excellent contribution made by Mrs Karen Goddard who completed her first full year in the new post of Business Manager and who has settled so well in the team.

In line with previous years, we were well supported financially with grants and donations by like-minded maritime and other charities, a full list of which can be found within the accounts later in this report. These are always most gratefully received and are essential to us in keeping the provision of care at the highest possible standard and our fees and rents at the lowest possible level. Additionally, the Society benefitted from several legacies, not always foreseen and unable to be planned upon but always most welcome when received; perhaps the reader might bear us in mind when will writing?!

In summary, therefore, we remain thoroughly upbeat, and there continues to be no dull moments in the life of the Royal Alfred; understandably, it is impossible to capture all the Society's activities and projects over 12 months. Suffice it to say, with another busy year in 2013 under our belts, a year in which the capability of the Society to meet its objectives was improved further and verified by external authorities, and the new outsourcing arrangements and internal

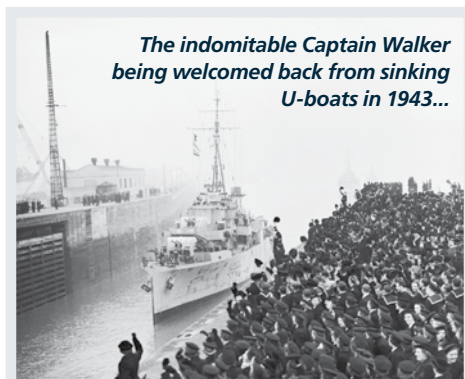


management structure settled well, the key challenges for 2014 now centre on building upon these changes as well as planning for and commencing the implementation of the refurbishment of facilities and accommodation in the upstairs nursing floor of Belvedere House. We will also be replacing the boilers and installing an emergency electrical

CONTINUED ON PAGE 8...

FOREWORD

generator. With two thorough medication audits concluded satisfactorily, a snap Care Quality Commission annual inspection report in December giving the Home full marks and assessed full statutory compliance in all areas, a surprise Environmental Health inspection rating highly and the key Health and Safety evaluation scoring top marks the year ended on a well-deserved high note. The Board of Management considered these results so exceptionally merit worthy that each member of staff was awarded a £100 bonus to help with Christmas expenses, and was very much appreciated by all.



Thus the Society remains financially well-founded, in good heart, and meeting well its charitable aim – the immensely important care of former seafarers. In doing so, two essential factors merit highlighting:

- The continued vital support, both financially and otherwise, received from our friends and fellow charitable organisations, and
- A caring, efficient, contented and hardworking staff whose continuing efforts look after the crucial well-being of up to 95 residents and tenants at any one time.



I am delighted to say that we continue to receive frequent praise and positive feedback, both written and verbal, on the Society's activities. This comes from a variety of sources, in the main from residents, relatives, friends and visitors, and for your interest I have once again included a small sample of these in the main body of the report (see pages 34 and 35).

I do hope that you enjoy reading our 2013 Annual Report and that you will be pleased with all that has been, is being, and with a fair wind will continue to be done by our Society and its people in 2014 for those that ultimately matter most to us – former seafarers in need and all those in our care.

**Commander Brian Boxall-Hunt O.B.E.
M.N.I. Royal Navy
Chief Executive**

LIFE AT ROYAL ALFRED



(Clockwise from left to right) the CEO marks Seafarer Awareness Week; Patron H.R.H. The Princess Royal recognises Trustee Capt. Tony Braithwaite for long service; Nursing Sister Dorota Serafin with residents; local Mayor and school-children visit the home; H.R.H. The Princess Royal meets long-serving Trustee, Capt. Mike Marchant; and Margaret Brazier (left) and Anne Kasey (right) celebrate an impressive combined 80 years of service to the Society

OUR AIM – CARING FOR SEAFARERS

The essential Trustee contribution

The retirement at the AGM of two of our longer serving trustees, one of which our longest ever, brought into sharp focus the essential contribution made by Trustees to the smooth and effective management of the Society. Captains Tony Braithwaite and Mike Marchant were each presented with silver framed certificates of service, with our sincere thanks, by our Patron the Princess Royal.

CAPTAIN A. D. BRAITHWAITE O.B.E. R.D. R.N.R.

With historical family origins as Thames lightermen and educated at HMS Conway, it was inevitable in a way that Tony should seek a career at sea and thus was in the Merchant Navy for 24 years as a deck officer, from apprentice to Master in the Port Line. He retired from the sea in 1991 having been the Operations and Fleet Personnel Manager at Cunard, and an officer in the Royal Naval Reserve since 1953 rising to the rank of Captain, and A.D.C. to HM the Queen in 1979/80. Although his contributions to other maritime charities and organisations have been huge, including Master of the Honourable Company of Master Mariners, Deputy Chairman of KGFS and a founder member of the Nautical Institute amongst many others, he was Trustee of our Society for 37 years from 1976. During this period, he helped and was instrumental in steering the Society through several difficult times, with longstanding duties on the Finance Committee and Vice Chairman of the Society until 2008. Although a committed member of the Board of Management, it will be his regular visits and presence in the Homes in Banstead that will probably be most missed, particularly as Chairman of the Belvedere House Visiting Committee. Tony's wise

counsel was often sought and freely given, and he had the innate ability to keep his powder dry in meetings until asking the most pertinent question and making the most salient point that all others had missed!

We were delighted when he accepted the Board's recommendation to become one of our Vice Presidents, thus keeping a key connection with the Society.

CAPTAIN F. M. MARCHANT M.B.E.

Although Mike's connection with the Society was a touch shorter than Tony's, at 23 years as a trustee, it was no less a substantial commitment to the wellbeing of former seafarers. Together with his contributions to other seafaring and charitable organisations such as the Mission to Seafarers, KGFS and the Merchant Navy Welfare Board, his time with the Royal Alfred has been significant. Having spent time in the Merchant Navy from 1950 as a cadet with P&O rising to command there in 1968 -71, this was capped by huge experience ashore in the industry as Group Manager Fleet Personnel and then Director Marine Affairs with P&O; expertise that was invaluable to the Society whether on Finance or Investments Committees or the Board of Management. This was often used to good effect within the Society and called upon frequently, and Mike's sound advice and guidance will be similarly missed.

Summary

Together, Captains Braithwaite and Marchant have made important contributions to the life of the Society, as many others have and still do. Their example is matched daily, and the time and commitment they have given is truly appreciated; part of the background tapestry which has kept the Royal Alfred delivering in accordance with its charter over nearly 150 years.

OUR PEOPLE – CARING FOR SEAFARERS



The following lists all the members and officers who comprised The Royal Alfred Seafarers' Society in 2013:



Patron

H.R.H. THE PRINCESS ROYAL

President

THE EARL OF INCHCAPE 1994

Vice-Presidents

CAPT. A. D. BRAITHWAITE O.B.E. R.D. R.N.R. 2013
(Trustee from 1976)
CAPT. SIR MALCOLM EDGE K.C.V.O. F.N.I. 1988
P. L. HARDING (Member from 1982) 2013
CAPT. G.W.S. MISKIN J.P. D.L. (Trustee from 1989) 2009
J. A. H. WEST (Trustee from 1970) 2000
CAPT. SIR MILES B. WINGATE K.C.V.O. F.N.I. 1978

TRUSTEES AND MEMBERS OF THE BOARD OF MANAGEMENT:

Chairman

CAPT. D.C. GLASS O.B.E. M.N.M. 2003

Vice-Chairman

D.M. GUNDRY J.P. F.C.I.P.D. F.I.C.S. 1990

CAPT. A.P.M. DAVIS F.C.C.A. F.C.I.S. A.C.M.A. 1992
CDRE. I. GIBB M.B.E. F.N.I. F.R.S.A. F.R.G.S. 1997
MRS E. A. GIBB B.E.M. 2006
CAPT. M. R. LOWLE 1993
CAPT. F. M. MARCHANT M.B.E. 1990
DR. R.D. REUBIN 2005

THE VISCOUNT COBHAM 2008
COUNCILLOR MRS. D. ROSS-TOMLIN 2008
COUNCILLOR MRS. J. SPIERS 2011
L.T. CDR. P. WAKE R.D.*.* M.Sc. F.N.I. R.N.R. 2012
J. W. WOOD 1995
J. WEDGE 2013

Hon. Treasurer

CAPT. A.P.M. DAVIS F.C.C.A. F.C.I.S. A.C.M.A. 1992

Co-opted Visiting Committee Members

P. L. HARDING
P. E. SEAGER M.A. A.C.I.B.
T. H. WAY F.C.I.P.D.

Pension Fund Member Nominated Trustees

A. R. QUINTON F.C.A.
P.E. SEAGER M.A. A.C.I.B.

Honorary Member of the Society

J. M. LAMB 1975

Chief Executive

COMMANDER B. P. BOXALL-HUNT O.B.E. M.N.I.
ROYAL NAVY

Honorary Chaplain

THE REVEREND A BARRON (from July 2013)

THE ROYAL ALFRED SEAFARERS' SOCIETY

Welcome to the 148th Annual Report and Financial Statements of The Royal Alfred Seafarers' Society for the year ended 31st December 2013.

This Annual Report presents the Society's audited Financial Statements for 2013 and summarises its activities during that year. It is laid out in accordance with the Charities Statement of Recommended Practice (SORP) 2005 guidelines. Besides advising subscribers and donors how their benefactions have been put to use, it describes, for the information of all those concerned with the welfare of

seafarers, the establishments administered by the Society for the benefit of retired seafarers and their dependants.

Limited quantities of previous Annual Reports are available upon request. The most recent Reports can also be viewed and downloaded at www.royalalfredseafarers.com.

Registered charity (No. 209776)



Where it all happens – providing a safe haven for seafarers in the leafy environs of the Surrey countryside

OPERATIONS

Belvedere House and Weston Acres House

Weston Acres, Woodmansterne Lane, Banstead, Surrey SM7 3HB

T 01737 360106
F 01737 353436
E enquiries@royalalfred.org.uk

REGISTERED HOME MANAGER:
Ms. B. A. Kasey R.G.N. Dip. H.E.

BUSINESS MANAGER:
Mrs. Karen Goddard

MEDICAL OFFICER RETAINED:
Dr. L. A. Nathan

Head Office

Postal address as above

T 01737 353763
F 01737 362678
E enquiries@royalalfred.org.uk
or CEO@royalalfred.org.uk
w www.royalalfredseafarers.com

AUDITORS: Haysmacintyre

ACTUARY: J. Jolliffe

PR & MARKETING AGENTS:
Acceleris

LAWYERS: Wedlake Bell LLP

INVESTMENT MANAGERS:
Rathbones

ACCOUNTANTS:
Jacob, Cavenagh and Skeet



Belvedere House



Weston Acres House



MANAGEMENT & OBJECTIVES OF THE SOCIETY

The Royal Alfred Seafarers' Society is a registered charity incorporated under Royal Charter.

The objectives of the Society are:

- A) To provide, carry on or maintain a Home or Homes or Housing for the care of aged, infirm or disabled seafarers or their widows or dependants.
- B) To act as trustee or almoner for granting relief to seafarers as defined above or to the widows or dependants of any such seafarers. This function has been in abeyance since 1996.

The Society is governed by a Board of Management whose members are Trustees. All powers of the Society are vested in and exercised by the Trustees, except in so far as by the Charter or the Bye-laws they are expressly required to be exercised by the Society in General Meeting. Every candidate for

membership of the Board shall be nominated by at least one member of the Society.

All matters dealt with by the Board are decided by a simple majority of those members present, unless the Charter or Bye-laws otherwise provide, each member having one vote excepting the Chairman of Board meetings who has a second or casting vote.

The Board is responsible for appointing a Chief Executive, who runs the Society on its behalf, and may appoint any other officers and employees to carry on the business of the Society. Some elements of the Society's affairs are either outsourced or draw on the expertise of retained consultancies, e.g. accounting, payroll, HR, health and safety, clinical governance, etc.

Belvedere House is subjected to regular inspection, at least annually, by the Care Quality Commission and the most recent results of these 'audits' of our establishment (December 2013) found us to be 'fully compliant' under the new system of assessments with no areas found wanting.



Arctic convoys - the devil's choice



Britain's lifeline - Atlantic convoys

HOW THE SOCIETY IS MEETING ITS CURRENT OBJECTIVES



The Society, then known as The Belvedere Institution, had as its original objectives in 1865 the maintenance of establishments for the care of aged and infirm Merchant Seamen and the provision of grant assistance to those living in the wider community and in need of help. The grant-making function has been in abeyance since 1996, when our remaining beneficiaries were passed to the Shipwrecked Mariners' Society. Although the care of seafarers and their widows and dependants is at our core, the present Royal Charter gives much wider latitude as to who may be admitted to our Homes and Housing.

As our raison d'être thus remains, of course, the care of seafarers and their widows and dependants, it is incumbent upon the Board of Management to ensure that our Homes and Housing are available to all such persons, irrespective of their financial situation, who fit the current necessary criteria.

For some years now our facilities have maintained seafarer numbers at a substantial proportion of around two-thirds of the total complement, and this is now above 80 percent and continuing to rise steadily.

During the year 2013 a total of 124 men and women were accommodated permanently in the Home and Housing, of whom 98 qualified as seafarers.

It is our aim to not only maintain the usual high proportion of seafarers in our care, but to actually increase it as much as possible. We realise that to do so will require the Society to maintain its high standards of care and extend its profile within the seafaring and ex-service community; to this aim a marketing plan is used as a guide. Assisted by our marketing and advertising agent, this plan continues to deliver solid success.



The military transport vessel Anvil Point, with another of the same class docked behind

THE SOCIETY 'IN THE NEWS'

There was much to talk about in 2013, from a special royal visitor at our annual general meeting (AGM) to major achievements by the individuals who make up our Society.

The press activity undertaken on our behalf by Acceleris last year secured 229 pieces of coverage. This continued to raise the Society's profile, promoting our commitment to seafarer support, dementia care and activities available to residents, and helping to boost the level of enquiries we received.

The role of communication in telling people about what we do and reaching those who may need our help is of utmost importance. We hope you enjoy reading about what we have been up to this year.



Anne and Margaret mark a combined 80 years of service to the Society

From pirates and sailors visiting the Home during Seafarers Awareness Week, Anne Kasey and Margaret Brazier celebrating a combined 80 years of service and one of our residents celebrating his 100th birthday, PR activity in 2013 had a strong emphasis on people within the home.

The year also included us joining the national Dementia Friends Campaign, with volunteer Ros Ellis championing this initiative. H.R.H. Princess Anne, meanwhile, recognised two of our trustees for their service to the Charity at our AGM (read more about this on page 10) and there remained a continued focus on the importance of quality specialist dementia care.

ROYAL ALFRED ONLINE



The society's online presence went from strength to strength in 2013.

There were more than 7,000 visitors to the website www.royalalfredseafarers.com - an increase of 35 percent from 2012. We also added a 'Seafarer Support' section to the website, providing a resource for people who have served at sea to search for additional support.

Our Twitter and Facebook accounts, meanwhile, continued to thrive and a Flickr gallery was created to feature the many images capturing the heart of the home and its residents.



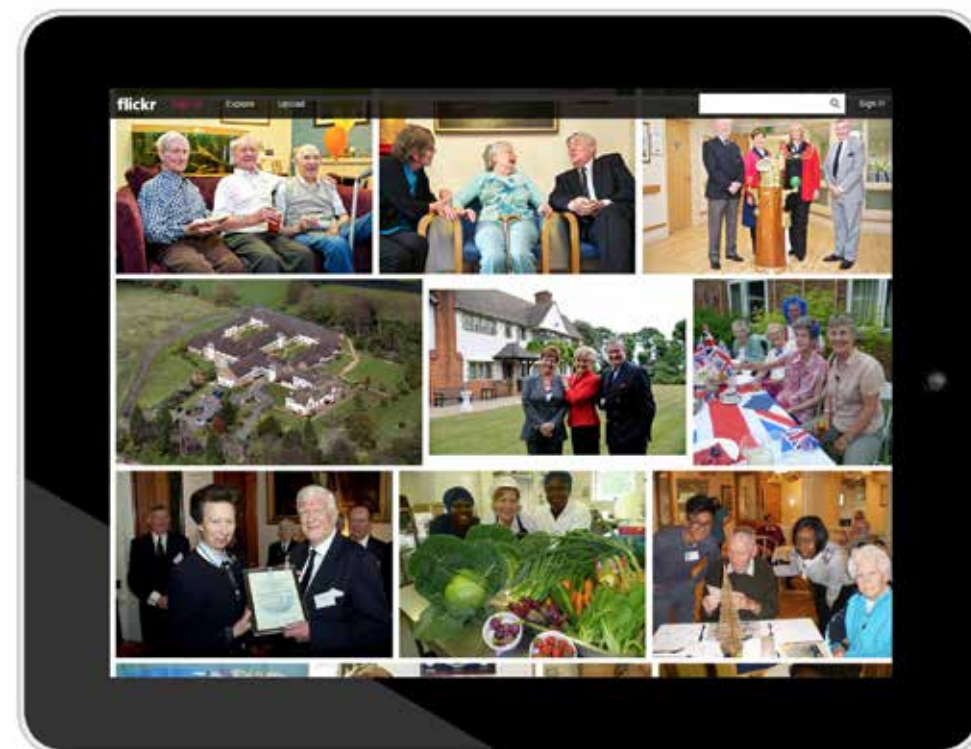
Royal Alfred Seafarers



@RASeafarers



royalalfredseafarers



OUR VOLUNTEERS

The Royal Alfred Seafarers' Society's work is supported by our volunteers and we know that our achievements would be difficult without them. We value our volunteers and aim to provide the best of experiences and the opportunity for them to achieve personal goals through working with us.

We believe that volunteers can make a significant contribution to our work and objectives. We also recognise that volunteering is an exchange. We value and benefit from the skills and knowledge that volunteers bring to the organisation. In return, we aim to ensure that volunteering with our organisation is a positive experience.

The number of volunteers working with us increased during 2013 and now stands at 28. We involve many individuals per year in volunteering who come from diverse backgrounds and therefore bring a variety of skills and experiences to the organisation. Volunteers significantly enhance the capacity of our services and provide us with increased talent, passion and drive.

During 2013 we embarked on our new volunteer programme; as part of the programme we have redesigned our induction, rewritten all role descriptions and produced a new volunteer handbook. The programme is linked directly to the UK quality standard for organisations that involve volunteers.

We offer all of our volunteers our sincerest thanks.

If you would like to find out more about volunteering with The Royal Alfred Seafarers' Society please visit the 'join us' section of our website – www.royalalfredseafarers.co.uk where all volunteer roles are advertised.



Judy and Les in the bar, ahead of celebrations for tenant Roy Ticehurst's 90th birthday



Pam and Frances help out at the home's Queen's Diamond Jubilee event



MEET OUR PEOPLE – VOLUNTEERS



Pam Jarvie



Having looked at several homes for my father, Jim Hookway, I heard about The Royal Alfred Seafarers' Society about six years ago from a good friend who was also looking. I came and had a visit and immediately felt comfortable and knew this was the right place for him. I visited him every day and saw how happy he was and, after he had a stroke, I came twice a day. This gave me the chance to see firsthand how caring the staff were and the personal attention they gave him and the other residents, and because I stayed with him every evening until he was settled, I saw their work over long periods of time.

All the staff were attentive and kind and included me in all aspects of my Dad's day. When my Dad was resting I realised I could help out in all sorts of ways, from talking to other residents and bringing people to entertainment and, having been a volunteer to many other organisations over 30 years, I realised I could give back my time to the people who were caring for my Dad.

When I lost him in 2009, I came to the Royal Alfred regularly to help with other residents as it was a hard habit to give up and I still thoroughly enjoy giving my time to those in need of a friendly hand or voice.

I help with everything from escorting residents to hospital and just sitting with people who need a hand to hold, to filling in Christmas and birthday cards and putting up Christmas decorations. Organising refreshments for a wake or a big birthday celebration still gives me great pleasure.

I am now a fully-fledged volunteer and enjoy meeting new residents, relatives and fellow volunteers and I am here on a nearly daily basis as my daughter works here so I still feel very much involved.

I love the variety of each day and being able to give back to a Society that gave so much to my Dad when he most needed it.

Pam Jarvie, Volunteer

Roz Ellis



After working as a nurse for many years and then in occupational health, I did not take to the idea of retirement easily! I knew I could still enjoy working with people and had a lot to offer so I embraced the idea of voluntary work. I worked for MIND, Meals on Wheels and the Citizens Advice Bureau after I retired.

When my husband Les and I moved into our brand new flat at The Royal Alfred Seafarers' Society in April 2011, I became a volunteer to befriend and help in any way I could with the residents. I talk to residents in their rooms, take them round the gardens, bring them down to entertainments and escort them to hospital for appointments. I hear lots of wonderful stories and enjoy listening to them reminisce about their past; their tales mean a lot to me as I was a volunteer in Northern Ireland at the height of the troubles.

I became interested in the new dementia unit and was delighted to be asked if I would attend a training day to become a 'Dementia Champion'. It was a fantastic day with talks and role play and I learned about the needs of the patients but also the relatives. Some felt guilt, some relief and often grief and they needed someone to share these emotions with.

On my return to Belvedere House I asked if I could start up a monthly informal coffee morning as a drop in centre for relatives of those with dementia. This allows people to chat to me and each other without the intrusion of others and it has produced excellent feedback.

Being so close to the nursing home makes it easy to get to know people and as my husband has also been a volunteer for two years as a stand-in for the bar, we are both enjoying our retirement in a useful way.

Roz Ellis, Tenant and Volunteer

MEET OUR PEOPLE - RESIDENTS



Tony Simms



At the age of 78 (born 9 October 1935), Tony Simms is one of our longest serving residents having been in our care for 17 years. Tremendously proud of his R.N. submariner roots he is one of our 'characters' and is frequently seen wearing his 'dolphin' brooch, together with cap and sweater bearing the submarine badge.

A widower, Tony served in the R.N. Submarine Service from November 1952 to August 1965, ending his time as an Engineer Lieutenant, having served as Chief Engineer in A class diesel submarines. Having left the Service at the age of 30, he spent five years as a diesel mechanic in Peckham before working out the oil rigs as a deep sea diver carrying out vital underwater repairs. He was 200 feet underwater during the Piper Alpha disaster when he was brought to the surface too quickly and suffered the inevitable 'bends' requiring him to spend time in both a decompression chamber and hospital.

Referred to us in 1996 by Tower Hamlets' social services, he was admitted wheelchair-bound due to psychological problems and has been in our care since. For the last ten years or so, within the caring environment of our modern facilities at Belvedere House, and for the past two in our newly commissioned specialist dementia care unit, both comrades and staff have encouraged him to regain his mobility and become self-caring and independent.

Tony is a popular resident who appreciates the grounds that provide him with safe, secure and pleasant surroundings and plenty of space in which to walk around. He is also often able to participate in the many and varied organised outings, enjoying the boat trips in particular, a return visit to the R.N. Submarine Museum in Gosport now that the Alliance has completed the refit will be his personal goal, frequently and loudly expressed!

Captain Roy and Mrs Thelma Davis



With my having been in the Merchant Navy between 1946 and 1956 as a young man and then again in 1975 and as a Master in 1978 until 1991, we found out about The Royal Alfred Seafarers' Society from an article in the 'Full Ahead' magazine, written by Duncan Glass, Chairman of the Society.

Although we had a lovely flat in Eastbourne at the time, we were both aware that we would need more support with our health eventually and the position of the flats was ideal. Consequently my wife Thelma and I moved into the brand new double flats at The Royal Alfred Seafarers' Society in July 2011.

It now gives us the chance to remain completely independent at the moment, in a beautiful setting with long reaching field views and yet within easy access of the local shops and bus route. With all maintenance dealt with promptly in-house we also feel free of property and garden upkeep and our flat is spacious and bright - ideal for our present needs. Having the care facilities on our doorstep is very reassuring for both us and our families.

The staff are absolutely wonderful, no request is too much trouble and life here is very, very pleasant and the accommodation is first class.

LIST OF SUBSCRIBERS

The Society is most grateful to Her Majesty and our other subscribers listed below:

ABF The Soldiers' Charity

Mr. J. J. Adler

Ms. R. Amlani

W&R Barnett Ltd.

Mrs. J. G. Begg

Mrs. S. Bonnor

Mr. M. Brookman

Mrs. M. P. Calder

Carnival UK

Mr. M. Cartwright

The Rt. Reverend J. K. Cavell

Mrs. A. L. Cawley

Mr. J. R. Chapman

Mr. J. A. Chiles

Mr. S. G. Dickens

The Joseph Strong Frazer Trust

Freemasons Merchant Navy Lodge No. 781

Mr. D. Gallon

Miss M. Gardiner

Mr. P. W. Goddard

Mr. J. A. Gunning

Mr. J. D. Hayward

Mr. G. S. Hodgkison

Honourable Company of Master Mariners &

Howard Leopold Davis Charity

Ms. V. Hughes

Mr. G. Hunt

Capt. G. P. Hunt

Mr. B. M. Hutchins

The Inchcape Foundation

Mr. J. R. Kempton

Mrs. P. J. Lane

The Edgar Lee Foundation

The 'Lest We Forget' Association

Market & Opinion Research International

The Merchant Mariners

Merchant Navy Welfare Board

Newick Branch Royal British Legion

Niarchos (London) Limited

The 'Not Forgotten' Association

Mr. B. J. H. Penaluna

The Privy Purse Charitable Trust

Mrs. A. P. Pinkerton

Queen Mary's Roehampton Trust

Royal Naval Association, Burgess Hill

Royal Naval Association, Edgware & Mill Hill

Royal Naval Association, Hanworth

Royal Naval Association, Letchworth & Hitchin

Royal Naval Association, No. 1 Area

Royal Naval Association, Romford &

Hornchurch

Royal Naval Association, Soham & District

Miss N. Sayers

Capt. E. M. Scott

Scottish White Fish Producers' Association,

Fraserburgh

Seafarers UK

Seven Seas Club

Mr. C. R. Shaw

Mr. R. A. Smith

Mr. P. S. Stopford

St. Matthew with Holy Trinity Parochial Church

Council

Mr. J. N. Travers

Corporation of Trinity House

Trinity House Maritime Charity

Mrs. S. A. Ward

Mr. D. R. H. Watson

Mr. N. Watson

Mr. B. A. Welham

Mrs. D. Z. Wells

Miss I. M. Williams

The Leslie Williams Trust

The Woodman, Woodmansterne

Mr. P. J. J. Woolcombe

The Woolpack, Banstead

LIFE AT ROYAL ALFRED



(Clockwise from left to right) Staff and residents get cosy for Woolly Hat Week in aid of the Sailors' Society; pampering in the on-site hairdressing salon; Jack Edwards, a tenant, prepares to pipe "splice the main brace" on Christmas Day (RIP April 2014); activities for residents with dementia; and residents Roy and Tom share a laugh and a pint...

CHARITIES STATEMENT OF RECOMMENDED PRACTICE 2005 (SORP)

This edition is the eighth Royal Alfred Seafarers' Society Annual Report to closely follow the guidelines and requirements of SORP 2005. It is hoped that the content of this Report provides valuable information not readily available in purely Financial Statements.

STATEMENT OF PUBLIC BENEFIT

The Trustees confirm that they have complied with the duty in Section 17 of the Charities Act 2011, in having due regard to the Charity Commission's general guidance on Public Benefit, and are reporting this here as they are required to do under the same directive.

We review our aims, objectives and activities each year. This review looks at what we have achieved and the outcomes of the work in the previous 12 months, then assesses the level of success of each activity and the benefits they have brought to those people for whom we are responsible for assisting under our Royal Charter.

The Charity Commission's General Guidance on Public Benefit (mentioned above) is very much used to help us ensure that our aims, objectives and activities remain focused and that those set for the following year and beyond accord with this doctrine also.

RESERVES

The Board of Management keeps the Reserves Policy under regular review. The Society holds reserves in order to ensure as far as possible that its prime objectives may be met in the future. Total free reserves at present stand at £10 million (£8.5 million), based on the standard calculation of Unrestricted Funds less Tangible Assets, and are required for any of the following purposes:

- To provide working capital, as required
- To maintain up to 12 months' expenditure in reserves so as to ensure that our services are not compromised in the short term. In the year under review this figure amounts to £2.8 million (£3.0 million)
- To provide for the (anticipated future replacement or) major improvement of Care Home and Housing facilities. At today's values, it is estimated that the maximum commitment in this respect would be £8 million.

The amount of the free reserves is, therefore, considered adequate.

INVESTMENT POLICY



The Society's policy is to:

- Maintain a diverse portfolio of quoted stocks
- Maintain the value of the portfolio in real terms
- Maximise the total return from capital and income combined while maintaining a medium level of risk
- Delegate investment of available funds to the Investment Committee of the Board who, in turn, delegate investment management to external investment managers on a discretionary basis, with a defined mandate.

RISK ASSESSMENT

As required, the Board of Management reviews the Society's Risk Management Policy at regular intervals. Having considered the primary areas of financial, operational, physical, regulatory and reputational risk, the Board is confident that the appropriate means of control have been adopted. Prudent management practices together with constant awareness of changes in the operating environment are felt to be in force.

The Management of the Society is responsible for the day-to-day management of risk and for passing to all levels of staff the necessity for constant awareness of all types of risk and of the need to act in such a way as to minimise any adverse events.

STATEMENT OF TRUSTEES' RESPONSIBILITIES

The law applicable to charities in England and Wales requires the Trustees to prepare financial statements for each financial year which give a true and fair view of the charity's financial activities during the year, and of its position at the end of the year. In preparing financial statements giving a true and fair view, the Trustees should follow best practice and:

- Select suitable accounting policies and then apply them consistently
- Observe the methods and principles in the Charities SORP
- Make judgments and estimates that are reasonable and prudent
- State whether applicable accounting standards and statements of recommended practice have been followed, subject to any departures disclosed and explained in the financial statements, and
- Prepare the financial statements on the going concern basis unless it is inappropriate to presume that the charity will continue in operation.

The Trustees are responsible for keeping accounting records which disclose with reasonable accuracy the financial position of the charity, enabling them to oversee the finances whilst ensuring that the financial statements comply with the Charities Act 2011. The Trustees are responsible for safeguarding the assets of the charity and hence for taking reasonable steps for the prevention or detection of fraud and other irregularities.

IN MEMORIAM

We gratefully acknowledge donations made to the Society during 2013 in memory of the following:

Mrs. A. J. Barnes
Mrs. E. F. Bland
Mrs. I. M. Chitty
Mr. F. W. F. Dobby
Mrs. A. R. Fenton
Mr. H. A. Gray
Mr. M. Hamers
Capt. G. H. Handbury-Grassick
Rev. Cdr. J. P. Kingcome
Mr. P. W. Roach
Mrs. D. L. Robinson
Mr. C. T. Shafe
Mrs. P. Shephard
Mrs. D. E. Smith
Mr. D. E. W. Southgate
Mr. P. H. Southgate
Mrs. J. B. Walsh
Mrs. D. N. A. Walton
Mr. P. R. Wilson

LEGACIES

We gratefully acknowledge bequests to the Society from the following:

Dr. A. M. Macarthur
Mrs. H. E. McMullen
Mr. J. W. H. Oates
Mrs. S. Stevenson
Rt. Rev. Bishop A. W. M. Weekes

A fitting floral salute to a mariner who has "crossed the bar"

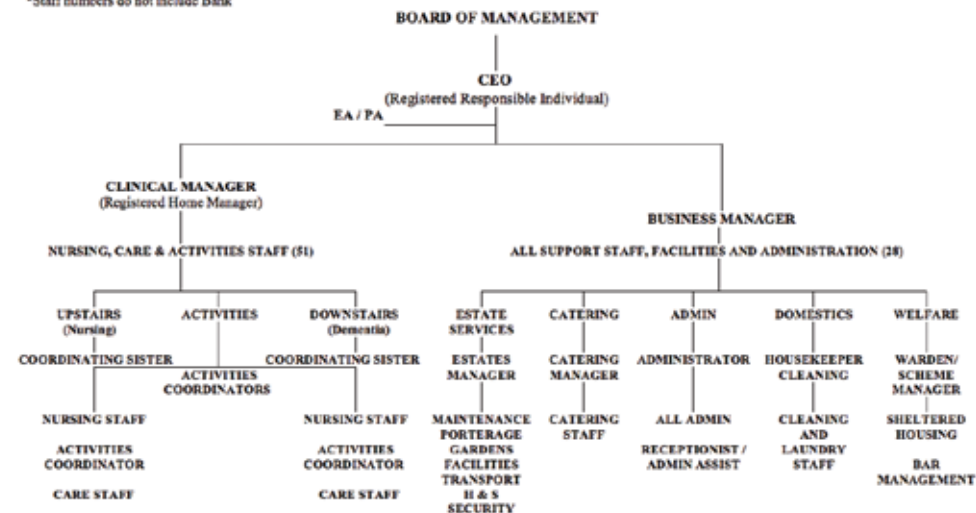


STAFF STRUCTURE



THE ROYAL ALFRED SEAFARERS' SOCIETY APPROVED NEW MANAGEMENT STRUCTURE 2012

*Staff numbers do not include Bank



The respect, friendship and commitment to care shown by staff to residents are what make the difference at Royal Alfred



The Home Manager's Report

During the first five months of 2013 Belvedere had the highest number of exchanges of residents, in and out, we have ever recorded. The increased activity meant we were very busy and 'kept on our toes' in order to maintain occupancy, which we achieved with an average of 94 percent for the whole year.

We started the year with new management contracts in place to cover Health & Safety (H&S), Finance, IT and HR. The change over from MHA management to these new companies was seamless and went ahead without a hitch.

We have re-written all of our policies and procedures and our employment hand book. These have all been added to an area on our website for the staff to access as they wish. We have also included e-learning training to the website for the staff to access.

Business Manager Karen Goddard went on a four-day H&S training course and Richard Condie, Estates Manager, attended an in-house fire trainer course. The overall mandatory training for all staff continues to be over the 90 percent mark.

Four members of staff and one volunteer passed the minibus driving course, which opens up more opportunities for the residents to get out and about and visit different places.

On the Wednesday of Seafarers Awareness Week in June, the Mayor of Banstead and Reigate paid us a visit and joined in the fun. Children from Woodmansterne Primary school came in fancy dress and sang sea shanties. The afternoon was very successful and we look forward to the same again in 2014.



(From left to right) 'The Palace party'; celebrating Sandra's 20 years of service; and a special birthday for Tony in style

Captain Tony Braithwaite retired from being a Trustee with the Society but fortunately will remain on the visiting committee. Tony has been an extremely proactive advocate for the Royal Alfred during his 40-year association and we are very, very grateful to him for his support. On the 19th June we held a small gathering to thank Tony for his years of service to Belvedere. As I had reached 30 years of service with the Royal Alfred myself during 2013, this was also recognised at the same time (unbeknown to me!)

On 21st June we held a summer Solstice party and although it was cloudy and a wee bit chilly, the occasion was well attended and everyone had a good time. We also felt it would be a nice idea to have an ice cream van visit once a week during the summer months, when the residents could go out and buy their own ice creams if they wished. This was very successful and the residents really looked forward to Monday afternoons.

Once a month throughout the year we have had a visit from Fawcett Consultancy Ltd, to advise and assist with aspects of clinical governance. This arrangement has worked extremely well and the Home continues to go from strength to strength.

Every year I mention 'Lest We Forget' and 'The Not Forgotten' Associations for the support they offer us in the way of entertainments and this year was no exception. The in-house concerts supported by them are always such a big hit for the residents; they absolutely love it! The residents have also enjoyed their visits to Wimbledon, Buckingham Palace, St James's Palace and the Royal Marine Band at Godalming and many river boat trips.



Nurses and managers have been equipped with electronic tablets in order to further improve the level of communication between team members and day-to-day note taking (more details on page 32)

The tenants have enjoyed several outings this year including one to Bletchley Park which was very interesting and they thoroughly enjoyed.

CONTINUED ON PAGE 32...

BELVEDERE HOUSE 2013

On 27th September our Chaplain Art Barron brought the Bishop of Croydon on a visit to Belvedere and the residents who spent time talking to him were delighted to see him. The residents continue to enjoy our association with the local schools, Greenacre and Woodmansterne Primary. The girls from Greenacre School came at Harvest Festival and sang a few songs and tenant Roy Ticehurst went to Woodmansterne School to share his maritime adventures with the children.

In October, electronic care planning was introduced to Belvedere House. This has been a steep learning curve for the staff and they have taken to the challenge like ducks to water! They have been 100 percent committed to ensuring this initiative works and I am extremely proud of them and the amount of work that has been undertaken.



Resident Humphrey Burgess proudly shows his centenary birthday card from The Queen

On 5th November we held a Bonfire Night gathering which was very successful, attended by many relatives and friends. We are very grateful to Rebecca Amlani for raising the money (£500) for the evening by holding a Bollywood dance afternoon in the summer.

On 6th December a party was held for Mr Humphrey Burgess' 100th birthday. The Mayor of Banstead and Reigate came to give her best wishes. Humphrey was delighted to share his special day with family and friends.

Judy Condie, Welfare Manager, has been very proactive this year at increasing the number of volunteers who have joined us. We would like to thank all of them for their support and help. All of them, regardless of how much time they are able to give, are very valuable to each and every one of the residents. **Thank you all so much.**

During the last two months of 2013 we had an environmental health inspection, a CQC inspection and a health and safety inspection. I am delighted to say that all of these went extremely well and Belvedere continues to be fully compliant in all the areas inspected.

To all the residents, relatives and volunteers and of course, the staff, I say **THANK YOU** for making Belvedere House the wonderful home it is today.

Anne Kasey
Clinical Manager

PAST TIMES - A PAGE FROM OUR HISTORY

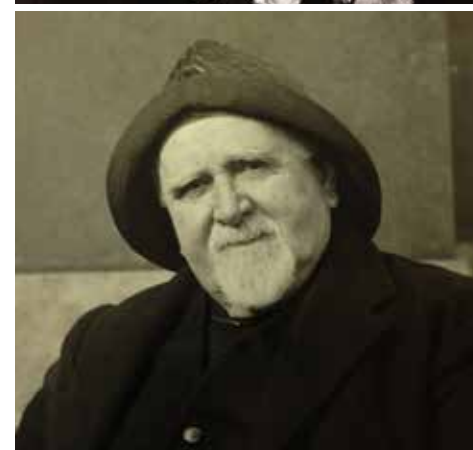


These verses have been inspired by the urgent need of The Royal Alfred Aged Merchant Seamen's Institution (established 1867) which appeals for funds to enable the Committee to assist the hundreds of old and destitute British Merchant Seamen now awaiting relief. Contributions – large or small – will be gladly welcomed and acknowledged by the Secretary, Mr J Bailey Walker at 38 Fenchurch Street, London EC.

OUR SAILORS

We have read in song; and story
Of brave deeds that sailors do;
They have fired our boyhood's fancy,
And have nerved our manhood, too.
Far and wide o'er leagues of ocean,
Under lowering skies or fair,
England's heart is with her sailors
Toiling nobly everywhere.
But the strongest hand must falter,
And the broadest back be bowed;
And the ear less keenly hearken
To the music of the shroud;
Whilst the eye grows dim with watching,
And the locks grow scant and grey;
Then the sailor runs for harbour
For he knows he's had his day.
Once the Workhouse bade him welcome
(Irony, alas! – but true!)
Or the "doss" house gave him shelter
With a strange ignoble crew;
Till the "Royal Alfred" – founded
By a small truehearted band –
Raised a fund and forthwith offered
To "Poor Jack" a helping hand.
We have praised – Ah me! How often –
In fine words what Jack has done;
Shall we not go one step further
And express our thanks each one,
By a well-time contribution –
Now that Christmas-tide draws near
To this Home for Aged Seamen,
"Jack's Last Port" at Belvedere.

A.M., 1910



LETTERS OF THANKS



16 OCT 2015
Vanguard News

Dear Commander Boxall-Hunt
Thank you so much for your kind letter following the death of my father Kargie Smith.
We in turn would like to thank you & all the staff at Belvedere House who work so tirelessly to support & encourage incoming residents & their families.
It is never an easy decision to give up your independence especially when you have 'lived at' for so long as in my father's case, but from the start we felt he was in a very caring and positive environment.

The length of time many of your staff have been with you is surely a testament to a great working environment.
My brother Ian & I were very touched by the presence of Ann Kelsey & Victoria Penwood taking time out of their busy schedules to attend my father's funeral. This I am glad to say because a great celebration of his life.
We will miss him.

To everyone at Belvedere House
We just wanted to pass on our sincere thanks to all the residents, staff & support staff at Belvedere House for the last year of his life.
In our father's history at Belvedere House, we received a lot of support from the staff, who were always kind to him. We always felt he was in a good home, and he was comfortable & in a good environment at the end of his life.
Thank you
Nile & Val Haining
Dina & Loretta Chandler

To ALL THE STAFF AT BELVEDERE
I WOULD LIKE TO SAY A SPECIAL THANK YOU FOR CARING AND LOOKING AFTER MY MOTHER FOR 10 VERY LONG YEARS.

Just to say -
A very warm thank you for your thoughtfulness and kindness.
Sincerest Thanks
You ~~have~~ MADE HER STAY WITH YOU AS HAPPY AS WAS HUMANLY POSSIBLE.
THANK YOU SO MUCH
Kay Ryan.
KILEEN BARRDS DAUGHTER.

Genuine and honest care
Both my parents live at Belvedere and both the staff and residents have been so kind to me. I have been looking for a place to live for some time and I have found it at Belvedere. The staff are so kind and the residents are so friendly. I have been so happy to live here and I am sure you will be too. I am sure you will be so happy to have me here. I am sure you will be so happy to have me here. I am sure you will be so happy to have me here.
Written in September 2013. Posted on 25 September 2013

John, Peter and I would like to thank everyone working at Belvedere House, nurses, cleaners, laundry staff, cleaners, maintenance etc - the bar, kitcheners and office & garden for the wonderful care they give our Mum, Doris, for the seven years she was a resident here.
A particular thanks to Rose, lovely people who keep residents happy - Anne, Louise & so hard to stimulate, with sensible, cards.

The nursing care which Anne received when she was discharged from hospital at the beginning of January has been really wonderful.
O you had made me very comfortable in the last few weeks of her life.
Thank you all so much.
Bob Hughes.
Love
Jennifer Brown
of the family

Magnificent treatment and facilities
I have had a wonderful time at Belvedere House for almost 8 years now and have a lot of good memories of my time there.
My father was a resident for 5 years and he died the last 2 years being looked after by the staff at Belvedere House.
They both had very different needs but were both looked after magnificently by the staff at Belvedere House.
I don't think I could do without the love, care and attention the staff give my father. My father is looking forward to his next visit to Belvedere House as he will be able to see his old friends and the staff who were so kind to him.
Written on Jan 2013. Posted on 01 August 2013

Residential Nursing Care after Able Replacement operation
Following a difficult operation for an ankle replacement in London, I needed residential nursing care for several weeks. The staff at Belvedere House were most welcoming. The day and night care was very good and the staff were most helpful. I was able to move into a private flat at the house and the staff were most helpful in making the transition. I was able to move into a private flat at the house and the staff were most helpful in making the transition. I was able to move into a private flat at the house and the staff were most helpful in making the transition.
Written in September 2013. Posted on 25 October 2013

To Margaret Brazier and all the staff at Belvedere House
I just wanted to write to say a very big thank you to you and all of the wonderful staff for looking after my father Leonard Stokes during his respite stay. I know he was very grateful for all the help and kindness he received. My mother could rest and recover from her knee operation knowing he was in such a welcoming and friendly, caring environment.
With best wishes and thank you all once again.
MRS JOAN CATTEN
(daughter of Leonard Stokes)

The Royal Alfred Scafflers' Society
10 October 2013
Wednesdays are all about therapy at the Royal Alfred, with reminiscence sessions, hand and foot massages and music

Like · Comment · Share
Sister Hancock, Laura Coughley, Sara Barber and 5 others like this.
Rosemary Hunt Lovely pic of my Grandpa
12 October 2013 at 10:11 · Unlike · 0 1
Andrew Barber Lovely picture of my Grandpa! He looks very happy there!
22 October 2013 at 11:52 · Unlike · 0 1
Jill Martin That's Reg!
22 October 2013 at 14:05 · Like
Yen Clear Thought I recognised him.
22 October 2013 at 13:43 · Like

Our father has been a resident of Belvedere House for two years and our mother for one year. The care they receive is wonderful, and when we visit them, there is such a friendly atmosphere in the home, that we enjoy coming.
When Judy was looking for a place to live, it was an ideal opportunity for us to volunteer and get involved. Our three week stint in the bar was fun and a chance to get to know staff, residents and tenants.
Although our spare time is limited, we are happy to help in any way we can.
Madeline Silvester and Francesca Jones.

Dear Commander Boxall-Hunt,
I am writing to say how very much I appreciated the wonderful care that I received when I was recently convalescing, at Belvedere House, following my hospital operation. I would like to thank you, and your excellent staff for their kindness shown to me during my enjoyable stay with you, that set me well on the way to recovery.
As a token of my appreciation I am enclosing a small donation.
While writing, may I please enquire if your flats and sheltered housing units are reserved solely for former scafflers and widows?
With kind regards,
Yours sincerely,
John A. Charles MBE

Wayne Collins @waynecollins1 · Jul 1
Thanks to the @RAScafflers care home in Burswood, went to visit my Grandad on Saturday, the care he gets at the home is incredible.
Retweeted by RoyalAlfredScafflers
Wayne Collins @waynecollins1 · Jul 3
@RAScafflers Thank you very much for the lovely feedback.
Wayne Collins @waynecollins1 · Jul 3
@RAScafflers no thank you for the amazing care your staff give my Grandad and the other residents. Really is a lovely home.
Like · Retweet · Favorite · Reply · Share

FINANCIAL BACKGROUND TO THE ANNUAL REPORT 2013

The full financial statements of the Society for the year ended 31 December 2013 appear on pages 38 to 50 (inclusive) of this report. The aim of this short summary is to highlight some key points and thus briefly to put the figures into some perspective.

OVERALL

Following last year's recovery plan based on the large capital expenditure in 2011, the financial year of 2013 ended with a lower than planned deficit and showing good progress towards the Society's strategic aim of resuming break-even at the end of 2014. In the customarily cautious summary of the Finance Committee chairman it was 'not a bad outcome'. I would agree with his assessment but perhaps venture a notch higher at 'satisfactory', or even 'very satisfactory'! No matter, whatever the wording chosen, the Society's finances are in good shape and improving in line with a sound plan.



Inflation in old currency?!

AUDIT AND KEY POINTS



At times during the year, particularly early on, it was not an outcome easily reached given the higher than average turnover in residents and subsequent reduction in income, and it was a real challenge to offset the reduced income with reductions in expenditure; particularly staff costs – but this was achieved without resorting to redundancies or other extreme management measures. Otherwise it was a year of change and the final stages of a three-year recovery period from the annexe and refurbishment projects. New accounting systems and accountants had been in place and settling down since the contract with MHA had come to a close halfway through 2012. To ensure that all was well with the transfer across, our auditors conducted a comprehensive internal 'controls check' in August and a newly written replacement Finance Manual was duly anointed and subsequently adopted by the Board of Management. The full, annual audit itself was declared 'clean' with no points to act upon.

SUMMARY

An unusually difficult year at times but ending better than it started and well on track in accordance with the endorsed business plan. The next financial year, 2014, will see further major capital spending to complete the Home refurbishment and replace the heating/hot water system and boilers, whilst balancing income and expenditure to the agreed budget.



The Toll - in memory of all those who gave their lives at sea in the service of this country during the Battle of Atlantic and Arctic Convoys...



Financial statements

For the year ended 31st December 2013

Image caption: RMS Queen Mary being waved off...

INDEPENDENT AUDITORS' REPORT TO THE TRUSTEES OF THE ROYAL ALFRED SEAFARERS' SOCIETY



We have audited the financial statements of the Royal Alfred Seafarers' Society for the year ended 31 December 2013 which comprise the Statement of Financial Activities, the Balance Sheet, the Cash Flow Statement and the related notes. These financial statements have been prepared under the accounting policies set out therein.

This report is made solely to the charity's trustees, as a body, in accordance with section 144 of the Charities Act 2011. Our audit work has been undertaken for no purpose other than to draw to the attention of the charity's trustees those matters which we are required to include in an auditor's report addressed to them. To the fullest extent permitted by law, we do not accept or assume responsibility to any party other than the charity and charity's trustees as a body, for our audit work, for this report, or for the opinion we have formed.

Respective Responsibilities of the Board of Management and Auditors

As described in the Statement of Trustees' Responsibilities the charity's trustees are responsible for the preparation of the financial statements in accordance with applicable law and United Kingdom Accounting Standards (United Kingdom Generally Accepted Accounting Practice).

We have been appointed as auditors under section 144 of the Charities Act 2011 and report in accordance with regulations made under section 154 of that Act. Our responsibility is to audit the financial statements in accordance with relevant legal and regulatory requirements and International Standards on Auditing (UK and Ireland).

We report to you our opinion as to whether the financial statements give a true and fair view and are properly prepared in accordance with the Charities Act 2011. We also report to you if, in our opinion, the Trustees' Report is not consistent with the financial statements, if the charity has not kept proper accounting records, if we have not received all the information and explanations we require for our audit.

We read the Trustees' Report and consider the implications for our report if we become aware of any apparent misstatements within it.

Basis of Opinion

We conducted our audit in accordance with International Standards on Auditing (UK and Ireland) issued by the Auditing Practices Board. An audit includes examination, on a test basis, of evidence relevant to the amounts and disclosures in the financial statements. It also includes an assessment of the significant estimates and judgements made by the trustees in the preparation of the financial statements, and of whether the accounting policies are appropriate to the charity's circumstances, consistently applied and adequately disclosed.

We planned and performed our audit so as to obtain all the information and explanations which we considered necessary in order to provide us with sufficient evidence to give reasonable assurance that the financial statements are free from material misstatement, whether caused by fraud or other irregularity or error. In forming our opinion we also evaluated the overall adequacy of the presentation of information in the financial statements.

Opinion

In our opinion the financial statements:

- give a true and fair view, in accordance with United Kingdom Generally Accepted Accounting Practice, of the state of the charity's affairs as at 31 December 2013 and of its incoming resources and application of resources in the year then ended; and
- have been properly prepared in accordance with the Charities Act 2011.

haysmacintyre

Registered Auditors

Date: 2 April 2014

26 Red Lion Square
London WC1R 4AG

STATEMENT OF FINANCIAL ACTIVITIES FOR THE YEAR ENDED 31ST DECEMBER 2013

	Note	Unrestricted Funds £	Restricted Funds £	Total 2013 £	Total 2012 £
Incoming Resources					
Incoming resources from generated funds					
Voluntary income	2	345,367	5,391	350,758	260,625
Investment income	3	289,904	-	289,904	285,312
Incoming resources from charitable activities	4	2,597,213	-	2,597,213	2,467,805
Total Incoming Resources		3,232,484	5,391	3,237,875	3,013,742
Resources Expended					
Costs of generating funds					
Costs of generating voluntary income	5	43,242	-	43,242	41,951
Costs of generating investment income	5	56,233	-	56,233	50,952
Charitable activities	6	3,160,086	20,301	3,180,387	2,979,696
Governance costs	9	22,962	-	22,962	18,796
Loss on disposal of fixed assets		4,072	-	4,072	-
Total Resources Expended		3,286,595	20,301	3,306,896	3,091,395
Net Incoming Resources		(54,111)	(14,910)	(69,021)	(77,653)
Other recognised gains and losses					
Gain / (loss) on investments		1,118,856	-	1,118,856	649,516
Actuarial (loss) on defined benefit pension scheme		(10,000)	-	(10,000)	(38,000)
Net Movement in Funds		1,054,745	(14,910)	1,039,835	533,863
Fund balances brought forward		12,417,358	403,809	12,821,167	12,287,304
Fund Balances Carried Forward		13,472,103	388,899	13,861,002	12,821,167



The cruise ship Minerva

BALANCE SHEET AT 31ST DECEMBER 2013



	Note	2013 £	2013 £	2012 £	2012 £
Fixed Assets					
Tangible assets	10		3,777,952		3,962,907
Investments	11		9,705,869		8,613,138
			13,483,821		12,576,045
Current Assets					
Debtors	12	106,888		84,943	
Cash at bank and in hand		653,168		520,315	
Funds held on behalf of residents		8,988		8,388	
		769,044		613,646	
Creditors: Amounts falling due within one year	13	(299,663)		(279,524)	
Net Current Assets			469,181		334,122
Net assets excluding Pension Liability			13,953,002		12,910,167
Creditors: Amounts falling due after one year					
Defined benefit pension scheme liability			(92,000)		(89,000)
Net Assets	14		13,861,002		12,821,167
Represented by:					
Unrestricted Funds:					
The Main Fund			9,805,897		9,812,493
Unrealised gains on investments			3,758,206		2,693,865
(Deficit) on defined benefit pension scheme			(92,000)		(89,000)
	14		13,472,103		12,417,358
Restricted Funds	14,15		388,899		403,809
			13,861,002		12,821,167

Approved by the Board of Management on 2nd April 2014
and signed on its behalf by:

Duncan Glass
D.C. Glass O.B.E.

Chairman

B.P. Boxall-Hunt
B.P. Boxall-Hunt O.B.E.

Chief Executive

CASH FLOW STATEMENT FOR THE YEAR ENDED 31ST DECEMBER 2013

	Note	2013 £	2013 £	2012 £	2012 £
Net Cash (Outflow) from Operating Activities (Note 18)	18		(21,881)		(33,063)
Returns on Investments and Servicing of Finance					
Interest & Dividends received		289,904		285,312	
Investment management fees		(56,233)		(50,952)	
Net Cash Inflow from Returns on Investments and Servicing of Finance			233,671		234,360
Capital Expenditure and Financial Investment					
Payments to acquire tangible fixed assets		(111,061)		(165,623)	
Proceeds from disposal of fixed assets		6,000			
Payments to acquire investments		(402,214)		(705,729)	
Proceeds from disposal of investments		428,338		694,680	
Net Cash (Outflow) from Capital Expenditure and Financial Investment			(78,937)		(176,672)
Increase in Cash (Notes 18, 19)	18, 19		132,853		24,625



The latest addition to the RN fleet - a Daring class destroyer...

NOTES TO THE FINANCIAL STATEMENTS FOR THE YEAR ENDED 31ST DECEMBER 2013



1 Accounting Policies

The financial statements are prepared under the historical cost basis, as modified by the revaluation of certain fixed assets. The financial statements are prepared in accordance with the Statement of Recommended Practice "Accounting and Reporting by Charities" (revised 2005) and in accordance with applicable financial reporting standards.

Income

Income is credited to the Statement of Financial Activities on an accruals basis except for grants which are credited on a received basis.

Grants

Grants received in respect of capital expenditure are credited to the Statement of Financial Activities gross as restricted funds. Depreciation on those assets is then charged against these funds over the expected useful life of the assets.

Expenditure

Expenditure is charged to the Statement of Financial Activities on an accruals basis including, where applicable, the charge for VAT which is not recoverable and is allocated between:

- expenditure incurred directly in the effort to raise voluntary contributions (cost of generating funds);
- expenditure incurred directly in the fulfilment of the charity's objects (charitable activities); and
- governance costs

Support Costs

All costs are allocated between expenditure categories on the Statement of Financial Activities on a basis designed to reflect the use of the resource

Expenditure is allocated directly to the cost centre to which it relates. Staff costs and other overheads which cannot be wholly allocated to any one cost centre are apportioned between cost centres on the estimated split of resources used.

Fixed Assets

Fixed assets with a cost of more than £2,000 are capitalised and depreciated. Improvements which enhance the future economic benefits of the property or extend its overall useful life are capitalised and are fully written off over the expected useful life of the property.

Depreciation

Depreciation is provided on the cost, less any expected residual value, over the expected useful lives of the assets concerned on the following straight line basis:

Buildings pre 2000	2% per annum
Buildings since 2000	4% per annum
Motor vehicles	20% per annum
Furniture and equipment	20% per annum
No depreciation is provided against freehold land.	

Investments

The Society's investment powers are defined by its Royal Charter, dated 11th May 1977. The Society's policy is to:

- Maintain a diverse portfolio of quoted stocks.
- Maintain the value of the Portfolio in real terms.
- Maximise the total return from capital and income combined while maintaining a medium level of risk.
- Delegate investment of available funds to the Investment Committee of the Board who, in turn, delegate investment management to external investment managers on a discretionary basis, with a defined mandate.

Investments in securities are shown in the balance sheet at their market value at the balance sheet date. Movements in the valuation of investments are shown as realised and unrealised gains and losses in the statement of financial activities.

NOTES TO THE FINANCIAL STATEMENTS FOR THE YEAR ENDED 31ST DECEMBER 2013 (CONTINUED)

1 Accounting policies (continued) Pensions

The cost of providing pensions for employees is charged to the Statement of Financial Activities over the average working lives of members in accordance with the recommendation of the pension scheme actuary. The pension scheme is a defined benefit scheme the assets of which are held independently from the assets of the Society.

The Society also contributes to the employees' group personal pension scheme. The contributions are held in funds held independently of the Society's assets.

The society has fully implemented FRS 17 'Retirement Benefits'. The deficit has been included in the balance sheet.

Fund accounting

Unrestricted funds are available for charitable use in accordance with the general objectives of the Society. Restricted Funds have arisen for specific reasons as explained in note 15.

2 Voluntary income	Unrestricted Funds £	Restricted Funds £	2013 Total £	2012 Total £
Legacies				
James	14,878	-	14,878	20,000
Kirman	-	-	-	12,603
MacArthur	10,000	-	10,000	-
McMullen	16,849	-	16,849	-
Oates	2,000	-	2,000	-
Stevenson	90,000	-	90,000	-
Weekes	5,000	-	5,000	-
Miscellaneous	-	-	-	857
	<u>138,727</u>	<u>-</u>	<u>138,727</u>	<u>33,460</u>
Grants, Subscriptions and Donations				
The Corporation of Trinity House	62,000	-	62,000	64,880
Royal Navy & Royal Marines Charity	-	-	-	38,500
Seafarers UK	30,000	-	30,000	30,000
Honourable Company of Master Mariners: Howard				
Leopold Davis Fund	50,000	-	50,000	30,000
ABF The Soldiers' Charity	12,000	-	12,000	15,000
Queen Mary's Roehampton Trust	15,000	-	15,000	7,000
Merchant Navy Welfare Board	18,450	-	18,450	-
Other donations and gifts	19,190	-	19,190	36,279
Other contributions to Restricted Funds	-	5,391	5,391	5,506
	<u>206,640</u>	<u>5,391</u>	<u>212,031</u>	<u>227,165</u>
Total voluntary income	<u>345,367</u>	<u>5,391</u>	<u>350,758</u>	<u>260,625</u>

3 Investment income	2013 £	2012 £
Dividends	286,415	281,819
Investment interest	3,077	3,003
Bank interest	412	490
	<u>289,904</u>	<u>285,312</u>

4 Incoming resources from charitable activities Maintenance Contributions from and for Residents	2013 £	2012 £
Belvedere House Care Home	2,449,567	2,318,704
Weston Acres Housing	147,646	149,101
	<u>2,597,213</u>	<u>2,467,805</u>

NOTES TO THE FINANCIAL STATEMENTS FOR THE YEAR ENDED 31ST DECEMBER 2013 (CONTINUED)



5 Cost of Generating Funds	2013 £	2012 £
Advertising	43,242	41,951
Investment management fees	56,233	50,952

6 Charitable activities Maintenance of Residents	Belvedere House Care Home £	Weston Acres Housing £	Royal Alfred House £	Total 2013 £	Total 2012 £
Direct costs					
Staff & Agency costs	2,038,240	52,635	-	2,090,875	1,952,805
Operating costs	199,247	3,103	-	202,350	199,327
Occupancy costs	75,748	40,855	-	116,603	96,390
Repairs and maintenance	74,453	17,896	-	92,349	88,441
Other costs of maintaining residents	46,778	16,422	515	63,715	69,836
Amenities expenditure	1,626	-	-	1,626	1,314
Support and Head Office costs					
Staff & Agency costs	177,311	9,332	-	186,643	118,391
Accountancy & Management services	60,692	3,194	-	63,886	150,325
Contract transition costs	9,990	526	-	10,516	18,483
Office and general expenses	69,235	3,644	-	72,879	94,621
	<u>2,753,320</u>	<u>147,607</u>	<u>515</u>	<u>2,901,442</u>	<u>2,789,933</u>
Pension scheme costs	(6,650)	(350)	-	(7,000)	(74,000)
Depreciation	263,310	2,635	-	265,945	263,763
	<u>3,029,980</u>	<u>149,892</u>	<u>515</u>	<u>3,180,387</u>	<u>2,979,696</u>

All support costs except for amenities expenditure (which is directly attributable to Belvedere House) are apportioned 95% to Belvedere House and 5% to Weston Acres. These allocations are in direct proportion to the average number of residents who occupied each house during the year.

7 Wages and Salaries	2013 £	2012 £
Gross wages	1,941,876	1,805,733
Social security	175,815	157,980
Pension costs	97,662	58,462
	<u>2,215,353</u>	<u>2,022,175</u>

8 Trustees and Employees	2013	2012
The average full-time equivalent number of employees, analysed by function was:		
Care staff	55	52
General staff	23	21
Management and administration	5	5
	<u>83</u>	<u>78</u>

One employee earned over £60,000 (excluding pension contributions) in 2013 (2012: one), and total employers pension contributions of £4,729 were paid for the provision of defined contribution schemes relating to higher paid staff. No trustee received remuneration for their services. Three trustees were reimbursed total travel and meeting expenses of £1,193 during the year. (2012: four, £1,024).

NOTES TO THE FINANCIAL STATEMENTS
FOR THE YEAR ENDED 31ST DECEMBER 2013 (CONTINUED)

9 Governance costs	2013 £	2012 £
Amount paid to auditors for:		
Audit: current year	13,080	12,720
Audit: Pension scheme	3,372	3,276
Other advice	6,510	2,800
	<u>22,962</u>	<u>18,796</u>

10 Tangible Fixed Assets	Freehold Land £	Freehold Buildings £	Furniture & Equipment £	Motor Vehicles £	Total £
Cost					
At 1st January 2013	40,000	5,151,826	626,177	84,414	5,902,417
Additions	-	27,635	58,626	24,800	111,061
Disposals	-	-	-	(19,495)	(19,495)
At 31st December 2013	<u>40,000</u>	<u>5,179,461</u>	<u>684,803</u>	<u>89,719</u>	<u>5,993,983</u>
Depreciation					
At 1st January 2013	-	1,442,991	443,268	53,250	1,939,509
Charge for the year	-	207,930	60,071	17,944	285,945
Released on disposals	-	-	-	(9,423)	(9,423)
At 31st December 2013	<u>-</u>	<u>1,650,921</u>	<u>503,339</u>	<u>61,771</u>	<u>2,216,031</u>
Net Book Value					
31st December 2013	<u>40,000</u>	<u>3,528,540</u>	<u>181,464</u>	<u>27,948</u>	<u>3,777,952</u>
31st December 2012	<u>40,000</u>	<u>3,708,835</u>	<u>182,909</u>	<u>31,164</u>	<u>3,962,908</u>

All fixed assets are either for direct charitable use, or for activities in the furtherance of the charity's objectives.

11 Investments	2013 £	2012 £
Market value at 1st January 2013	8,613,137	7,952,573
Acquisitions at cost	402,214	705,729
Less: Sale proceeds	(428,338)	(694,680)
Net Gain on revaluation at 31st December 2013	1,118,856	649,516
Market value at 31st December 2013	<u>9,705,869</u>	<u>8,613,138</u>

Historical cost at 31st December 2013	<u>5,947,663</u>	<u>5,919,273</u>
---------------------------------------	------------------	------------------

All investments are listed on a U.K. recognised stock exchange or are open-ended investment companies. No investment represented more than 5% of the market value of the Society's portfolio at 31st December 2013.



Royal Fleet Auxiliary ship with tugs



Two RN patrol boats at speed after dark

NOTES TO THE FINANCIAL STATEMENTS
FOR THE YEAR ENDED 31ST DECEMBER 2013 (CONTINUED)



12 Debtors	2013 £	2012 £
Amounts due from residents & tenants	73,580	52,180
Other debtors	4,236	32,763
Prepayments and accrued income	<u>29,072</u>	<u>-</u>
	<u>106,888</u>	<u>84,943</u>

13 Creditors	2013 £	2012 £
Funds held on behalf of residents	8,988	8,388
Trade creditors	61,007	51,417
Taxation and Social Security	53,208	46,503
Other creditors	101,587	73,299
Accruals and deferred income	<u>75,073</u>	<u>99,917</u>
	<u>299,863</u>	<u>279,524</u>

14 Analysis of Net Assets between Funds	Unrestricted Funds £	Restricted Funds £	Funds £
Tangible fixed assets	3,397,155	380,797	3,777,952
Investments	9,705,869	-	9,705,869
Current assets	760,942	8,102	769,044
Current liabilities	(299,863)	-	(299,863)
Defined Benefit Pension Liability	(92,000)	-	(92,000)
	<u>13,472,103</u>	<u>388,899</u>	<u>13,861,002</u>

15 Restricted Funds	Capital Assets £	Amenities Accounts £	Total £
Balance at 1st January 2013	399,472	4,337	403,809
Incoming resources (note 2)	-	5,391	5,391
Resources expended	(18,675)	(1,626)	(20,301)
Balance at 31st December 2013	<u>380,797</u>	<u>8,102</u>	<u>388,899</u>

The capital section of the restricted fund relates to the development at Belvedere House, and various items of furniture and equipment there. The amenities restricted fund relates to the provision of "comforts and treats" for residents such as parties and outings.



The Southampton Harbour Master's launch...

NOTES TO THE FINANCIAL STATEMENTS FOR THE YEAR ENDED 31ST DECEMBER 2013 (CONTINUED)

16 Pension Schemes

^a The Society operates a Pension Scheme providing defined benefits in respect of service prior to 30 March 2007. The assets of the Scheme are held separately from those of the Society, being invested with Friends Life. Contributions to the Scheme have been calculated so as to spread the cost of pensions over the period up to members' retirement. The contributions are determined by a qualified actuary on the basis of actuarial valuations using the projected unit method. The most recent valuation was made as at 1 March 2011.

On 30 March 2007, the Scheme closed, breaking the link to members' future salaries. The Society now pays contributions to the employees' group personal pension arrangement for those members of the Pension Scheme still in service at 30 March 2007. The disclosures below relate to the Friends Life funds for the defined benefit Pension Scheme.

The latest full triennial actuarial valuation was carried out at 1 March 2011 by a qualified independent actuary. This showed that the value of the Fund's liabilities at that time amounted to £1,372,900, while the value of the Fund's assets amounted to £1,270,700, thus disclosing a deficit of £102,200. The Society is making good this deficit by the payment of special contributions of £1,400 per month from 1 March 2011 until 29 February 2012 and of £830 per month from 1 March 2012 until 31 August 2024, unless any change is found to be necessary following the next formal actuarial valuation due to take place as at 1 March 2014.

Contributions paid during the year to 31 December 2013 have amounted to £9,960. The contributions paid during the year ending 31 December 2012 amounted to £11,100.

During the year ended 31 December 2013, one member has elected to receive her pension, and this was secured under the Guaranteed Annuity terms with Friends Life. The number of deferred members has therefore reduced from 14 (12 female and 2 male) to 13 (11 female and 2 male).

An actuarial valuation was also carried out on 31 December 2012, as required by the FRS 17 regulations, and this is updated to 31 December 2013. The major assumptions made at these last two dates were:-

	2013	2012
Rate of revaluation of deferred pensions	3.0%	3.0%
Rate of increase in pensions in payment	3.0%	3.0%
Discount rate	4.0%	4.0%
Inflation assumption	3.0%	3.0%
Pre and post retirement mortality table	PNA00 long cohort with 1% pa underpin	PNA00 long cohort with 1% pa underpin

The mortality rates used in the 2013 Valuation correspond to those used in the 2012 valuation, which reflect the continued general improvement which has occurred in longevity. The financial assumptions also remain the same as those used in the 2012 valuation. The proportion of members assumed to be married at death is 85% in the case of males and 75% in the case of females.

The market value of the with profits insurance policy shown as £1,339,000. At 31 December 2012, the amount of the Fund was shown as £1,389,000, and this included a sum of nearly £70,000 which related to the amounts which the Trustees had been overcharged for the purchase of pensions. In the event the amount credited to the Fund was slightly less at £67,187. There are still a number of queries outstanding with Jardine Lloyd Thompson, which need to be settled, so further repayments are expected, but credit has not been taken for those in the Valuation.

Deferred pensions in excess of the Guaranteed Minimum Pension (GMP) increase in line with Revaluation Orders, whilst the GMPs are increased by reference to the fixed rate Revaluation Orders.

NOTES TO THE FINANCIAL STATEMENTS FOR THE YEAR ENDED 31ST DECEMBER 2013 (CONTINUED)



The actuary's projected value of assets and liabilities at 31 December 2013 is detailed below.

	2013 £	2012 £
Market value of with profits insurance policy	1,339,000	1,389,000
Present value of scheme liabilities	(1,431,000)	(1,478,000)
Deficit in Scheme	(92,000)	(89,000)

The death in service benefits are insured separately.

Analysis of the amount credited	2013 £	2012 £
Expected return on Pension Scheme assets	55,000	53,000
Interest on Pension Scheme liabilities	(58,000)	(60,000)
Net return	(3,000)	(7,000)

Amount recognised in Statement	2013 £	2012 £
Actual return less expected return on Scheme assets	(9,000)	(24,000)
Experience gains and losses arising on scheme liabilities	(1,000)	(30,000)
Reduction in liabilities arising from improvement in Guaranteed Annuity rates	-	55,000
Changes in assumptions underlying the present value of the scheme liabilities	-	(39,000)
Actuarial gain recognised in Statement of Financial Activities	(10,000)	(38,000)

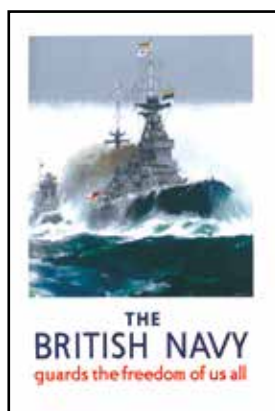
Movement in deficit during the	2013 £	2012 £
(Deficit) in scheme at beginning of the year	(89,000)	(125,000)
Movement in year:		
Contributions	10,000	11,000
Refund of overpaid contributions	-	70,000
Other finance expenditure	(3,000)	(7,000)
Actuarial (loss)	(10,000)	(38,000)
(Deficit) in scheme at end of the year	(92,000)	(89,000)

History of experience gains and	2013 £	2012 £	2011 £	2010 £	2009 £
Difference between expected & actual return on Scheme assets	(9,000)	(24,000)	33,000	17,000	(1,000)
Experience gains and losses arising on the scheme liabilities	(1,000)	(30,000)	(48,000)	64,000	(12,000)
Amount recognised in Statement of Financial Activities	(10,000)	(38,000)	(15,000)	81,000	(152,000)

^b The Society also contributed to the employees' group personal pension scheme during the year. Contributions during 2013 amounted to £87,702 (2012 - £47,030); contributions of £9,886 were outstanding at the balance sheet date.

NOTES TO THE FINANCIAL STATEMENTS FOR THE YEAR ENDED 31ST DECEMBER 2013 (CONTINUED)

17 Capital Commitments	2013	2012			
	£	£			
Expenditure contracted	58,000	-			
Expenditure authorised by the Trustees, but not contracted	250,000	-			
	<u>308,000</u>	<u>-</u>			
18 Reconciliation of Operating Surplus to Net Cash Outflow from Operating Activities	2013	2012			
	£	£			
Operating surplus	1,039,835	533,863			
Investment income	(289,904)	(285,312)			
Investment management fees	56,233	50,952			
(Gain) on investments	(1,118,856)	(649,516)			
Loss on disposal of fixed assets	4,072	-			
Depreciation charge for the year	285,945	263,763			
(Increase) in debtors	(22,545)	(288)			
Increase in creditors	20,339	89,475			
Increase / (Decrease) in deficit on defined benefit pension scheme	3,000	(36,000)			
Net Cash (Outflow) from Operating Activities	<u>(21,881)</u>	<u>(33,063)</u>			
19 Reconciliation of Net Cash Flow to Movement in Net Funds	2013	2012			
	£	£			
Increase / (Decrease) in cash funds in the period	132,853	24,625			
Net funds at 1st January 2012	520,315	495,690			
Net Funds at 31st December 2012	<u>653,168</u>	<u>520,315</u>			
20 Analysis of Changes in Net Funds					
	At 1st January 2012	Cash Flows	At 1st January 2013	Cash Flows	At 31st December 2013
	£	£	£	£	£
Cash at bank and in hand	495,690	24,625	520,315	132,853	653,168



Images courtesy of the Imperial War Museum

HOW YOU MAY HELP THE SOCIETY



Every donation or legacy makes a vital contribution and we are grateful for all the gifts we receive. A suitable donation form is provided on page 53 of this Report together with a standing order form on page 54 if you wish to make regular donations.

Whatever you decide to do, please send the forms to us, making sure to include the bank's full address to which we can forward the standing order form. We set out below some information on how you can help our work to continue.

By Donation under Gift Aid

If you pay sufficient income tax or capital gains tax you can make tax-efficient donations of any amount to charities. If you do make your donation under Gift Aid rules, The Royal Alfred Seafarers' Society can claim 25 pence from HM Revenue & Customs for every pound you donate. If you pay a higher rate of tax you can reclaim the higher rate component in your own tax return.

If you can increase the value of your gift, whether one-off or regularly by standing order, please complete the Gift Aid declaration on page 53 and return it with your donation.

By Give as You Earn

If your employer operates Give as You Earn you can take advantage of the facility to the benefit of The Royal Alfred Seafarers' Society.

By Remembering the Society in your Will

Legacies are a certain way of ensuring that your support for The Royal Alfred Seafarers' Society continues after your death. They provide a very important source of income and help to ensure that our work carries on in the future.

If you are kind enough to remember the Society in your Will we suggest that the following wording might be appropriate:

"I give and bequeath to The Royal Alfred Seafarers' Society (Registered Charity No. 209776) the sum of £..... OR all the residue of my estate OR percent of the residue of my estate

And I declare that the receipt of the Chief Executive or other authorised officer for the time being of the Charity shall be sufficient discharge to my executors."

NOTES ON DONATING

- 1 You can cancel this declaration at any time by notifying the Society.
- 2 To be eligible under Gift Aid rules, you must pay an amount of income tax and/or capital gains tax at least equal to the tax that the Society reclaims on your donations in the tax year (currently 25p for each £1 you give). If in the future your circumstances change and you no longer pay tax on your income and capital gains equal to the tax that the Society reclaims, you must cancel your declaration (see note 1).
- 3 If you pay tax at the higher rate you can claim further tax relief in your Self Assessment tax return.
- 4 If you are unsure whether your donations qualify for Gift Aid tax relief, please speak to us or ask your local tax office for leaflet IR113 Gift Aid.
- 5 Please notify the Society if you change your name or address.



The fabulous cake baked for Seafarers Awareness Week 2013...

TEAR HERE

DONATION FORM



Donation

I enclose a cheque for £ as a gift to the work of the Society for the benefit and aid of British seafarers, their widows/widowers and dependents.

Gift Aid Declaration

Please read carefully the notes on page 52; if you are eligible, and wish to do so, please complete the following information to enable The Royal Alfred Seafarers' Society to reclaim the tax direct from the Government on your behalf:

* I would like the above donation and any future donations to be made to The Royal Alfred Seafarers' Society through the Gift Aid Scheme:

Name:

Title:

Full Postal Address:

Postcode:

Date:

* Delete if not applicable to your donation.

STANDING ORDER FORM

TEAR HERE

I (Full name)

of (Address)

Postcode

Request you to pay to:

National Westminster Bank plc, St Nicholas Centre, Sutton, Surrey SM1 1DH

for the credit of The Royal Alfred Seafarers' Society (Sort Code 60-21-08 Account No. 43455743)

the sum of (amount in words)

(amount in figures) £

starting on this date

and thereafter monthly/annually until further notice.

Signature:

Today's date:

To (name of bank)

of (Address)

Postcode:

Your account number:

ADVERTISING IN THE 1800'S



THE ROYAL ALFRED
Aged Merchant Seamen's Institution,
Founded 1857. Established in 1867.
The ONLY National Institution which provides a
PERMANENT HOME or a PENSION
for Aged British Merchant Seamen in Distress
of all ranks and creeds and irrespective of locality in the
United Kingdom.
A SPECIAL HOME FOR INCURABLE SEAMEN.
The Institution also administers the
WIDOWS' BENEVOLENT FUND
and the
SAMARITAN FUND.
The first for the relief of Widows of British Merchant Seamen,
and their Children, and the second to help over periods of distress
any Disabled British Sailor of any age or his dependents.
Many of these are War Sufferers.
Over **ONE THOUSAND** Seamen or Dependents are
at present in The Royal Alfred Homes, in receipt of an Out-
Pension, or Samaritan Relief.
Over 6,000 British Seamen have so benefited.
£9,500 per annum now being paid in OUT-PENSIONS.
£8,250 per annum now being paid for maintenance of the
Royal Alfred Homes and their old Sailor Inmates.
£2,500 per annum now being paid in monthly grants to
Widows.
£1,500 per annum in Samaritan Grants to Disabled
Seamen and Dependents.
£20,000 required annually. Only reliable income £5,000.
Dependent upon Voluntary Contributions.
NO DESERVING APPLICANT IS REFUSED HELP.
OUR APPEAL AND OUR WORK IS NATIONAL AND URGENT.
Central Office of the Institution,
58, FENCHURCH STREET, LONDON, E.C. 3.
Secretary: ERNEST L. SMITH.
HOWARD & JONES, LTD., Printers, 16-18, Bury Street, E.C. 3.



The Royal Alfred Seafarers' Society Annual Report 2013

The Society, incorporated under Royal Charter, is a registered charity (No. 209776) under the Charities Act, 1960.